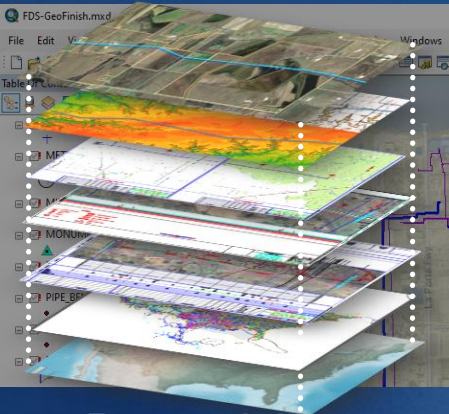




# GEOFINISH

Built in GIS, CAD & Energy Standards

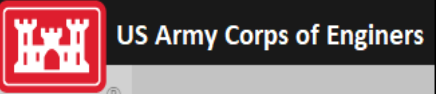
## Data Model Loaders For Owners Looking for Headache Free Tools



AUTODESK®  
AUTOCAD® CIVIL 3D®



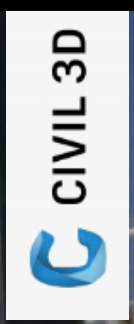
Ready to Work & Easy Configurable



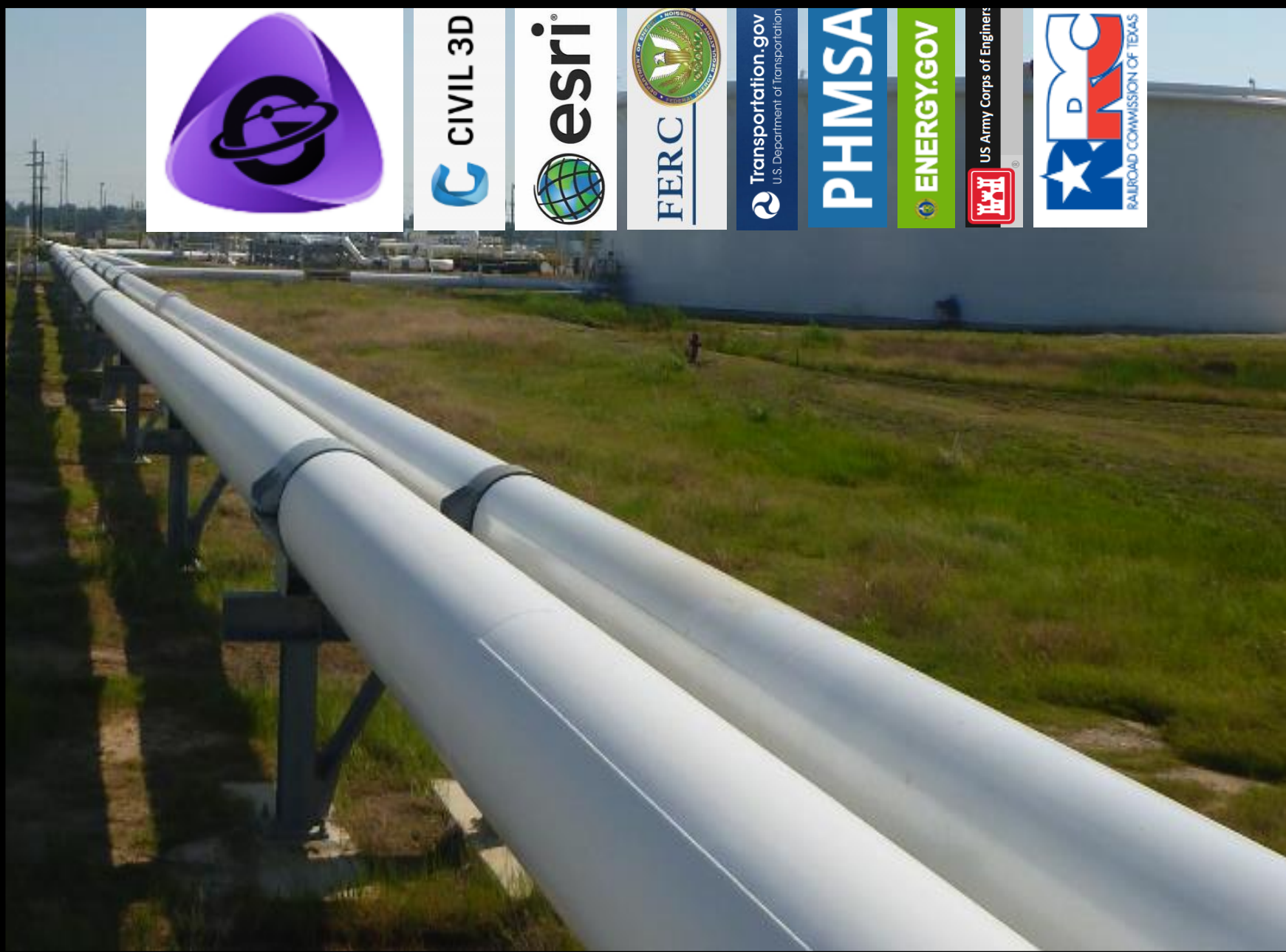


**Compliance Ready  
Quicker Regulations  
Faster GIS Migration  
Compatible Formats**

**Built to Energy Industry Standards**



**Oil, Gas, Water, Power Asset Data Management**



**Operations, Maintenance Qualified**

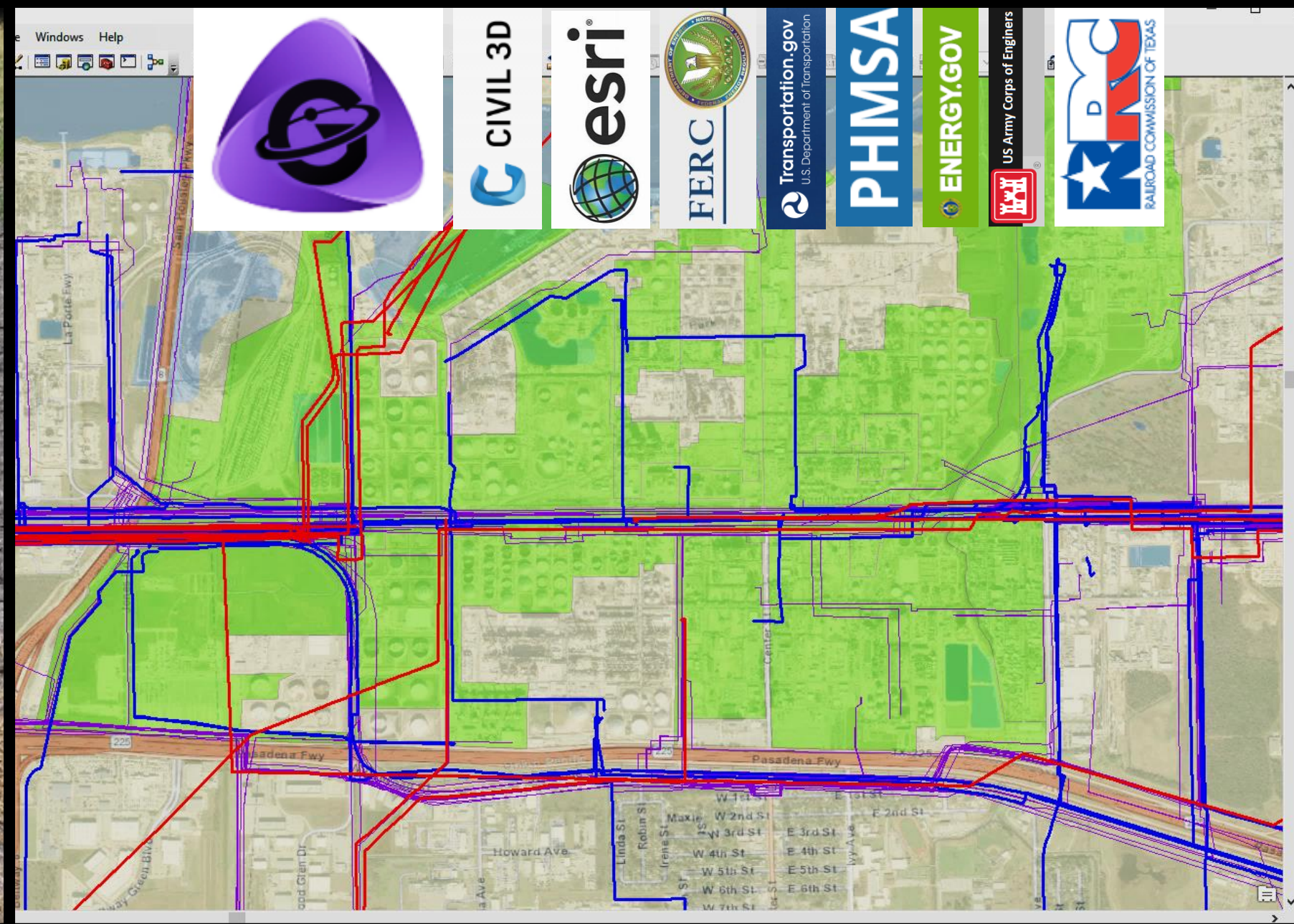


- BOND\_LEAD
- BORE\_HOLE
- CAD\_WELD
- CL\_DITCH
- CL\_PIPELINE
- CL\_RAILROAD
- CL\_ROAD
- CL\_WATERWAY
- CLOSURE
- CONCRETE\_SLAB
- ControlPoint
- DEPTH\_OF\_COVER
- EIM\_DOCUMENT
- ELBOW
- ELEVATION\_PNT
- FENCE\_LINE
- FLANGE
- FOREIGN\_LINE\_CROSS
- GROUND\_BED
- ALIGNMENT\_SHT\_DEF



**Integrity  
Compliance  
Qualified**

**Built to Government Standards for Regulations**

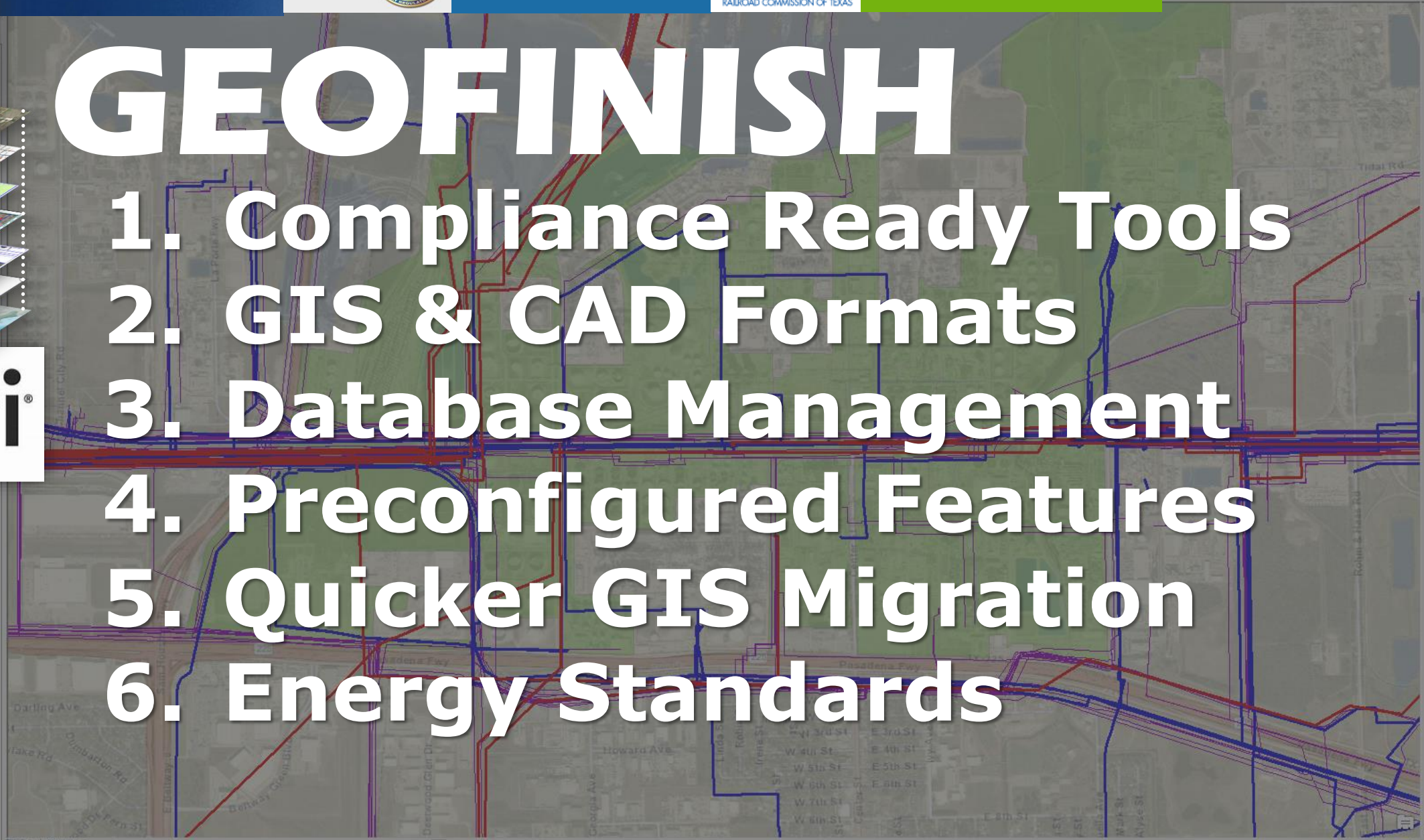
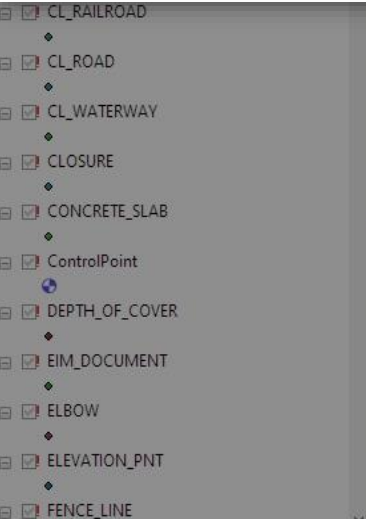
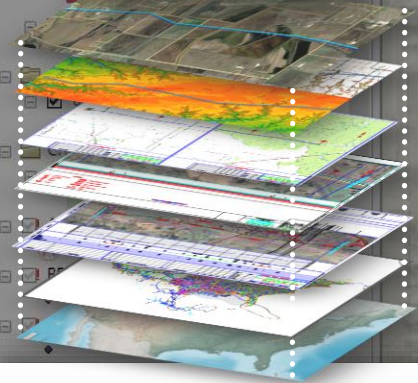


# Project Lifecycle Asset Data Management



# GEOFINISH

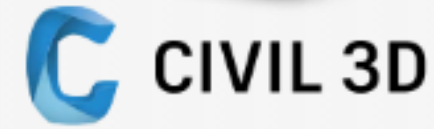
1. Compliance Ready Tools
2. GIS & CAD Formats
3. Database Management
4. Preconfigured Features
5. Quicker GIS Migration
6. Energy Standards



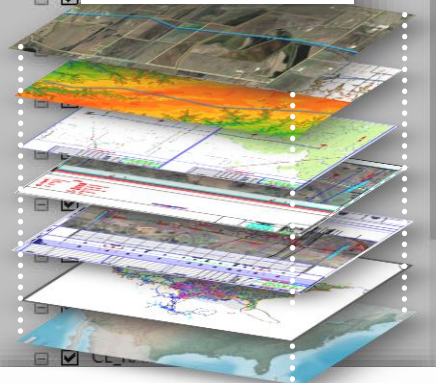
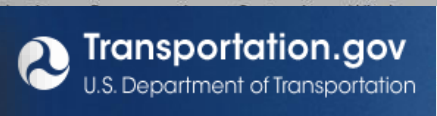
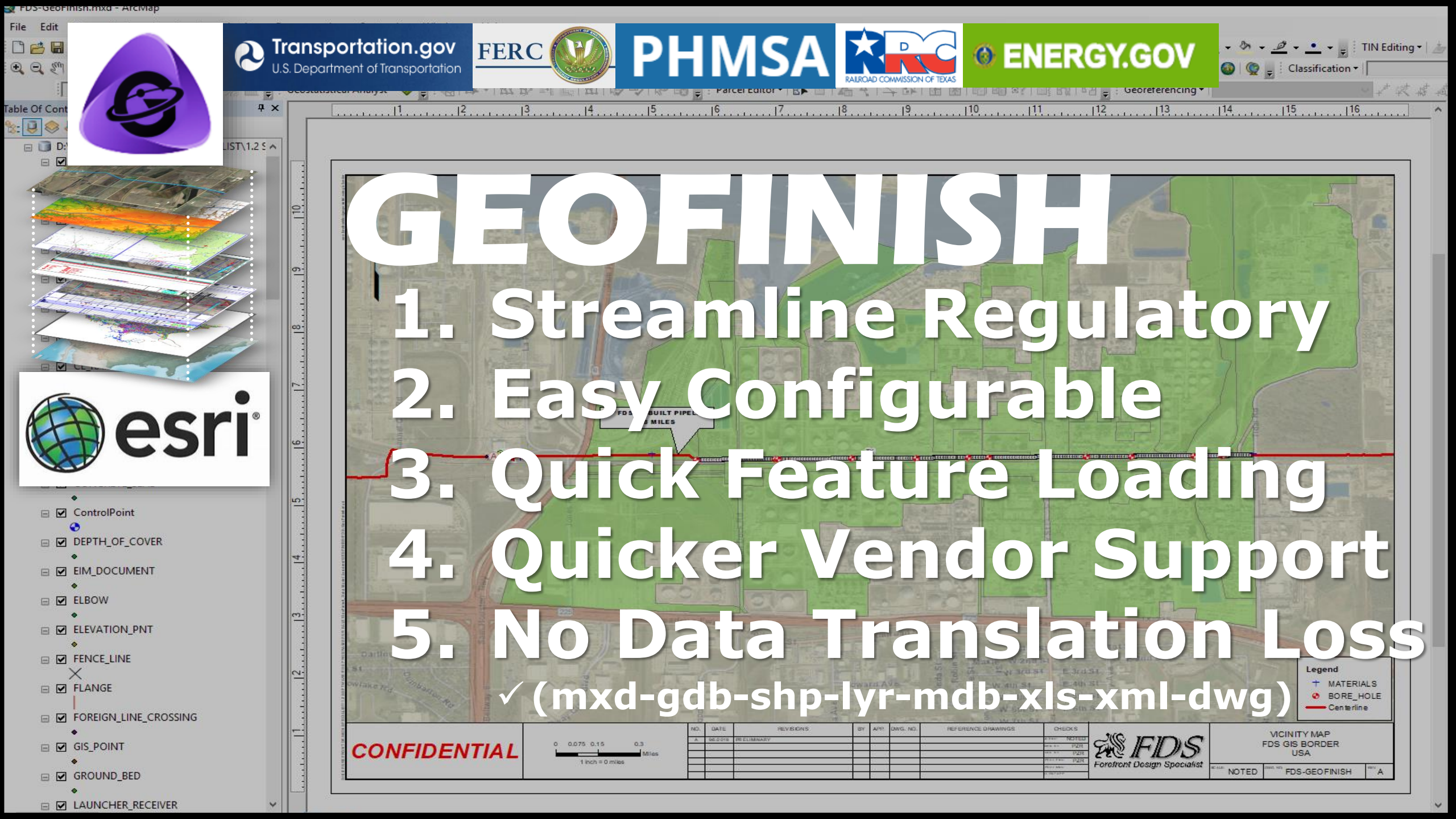


# GEOFINISH

1. Vendor Ready
2. Everything Built in GIS is also Built in CAD
3. No Data Translation Loss
4. Saves Time and Money







# GEOFINISH

1. Streamline Regulatory
2. Easy Configurable
3. Quick Feature Loading
4. Quicker Vendor Support
5. No Data Translation Loss  
✓ (mxd-gdb-shp-lyr-mdb-xls-xml-dwg)

**CONFIDENTIAL**

0 0.075 0.15 0.3 Miles  
1 inch = 0 miles

NO.	DATE	REVISIONS	BY	APP.	DWG. NO.	REFERENCE DRAWINGS	CHECKS
A	06.2016	PRELIMINARY					NOTED
							NOTED
							NOTED
							NOTED

**FDS**  
Forefront Design Specialist

VICINITY MAP  
FDS GIS BORDER  
USA

NOTED FDS-GEOFINISH A



- World Boundaries and Places
- ANODE
- BEND\_DATA
- BORE\_HOLE
- CASING
- EIM\_DOCUMENT
- FLANGE
- LAUNCHER\_RECEIVER
- MANHOLE
- METER
- MILEPOST
- MONUMENT
- ELEVATION\_PNT

lap selection Geoprocessing Customize Windows Help

1.6,318,358

Drawing

98%

3D Analyst

Geostatistical Analyst

Parcel Editor

Georeferencing

**PHMSA**

**RRC**  
RAILROAD COMMISSION OF TEXAS

**US Army Corps of Engineers**

# GEOFINISH

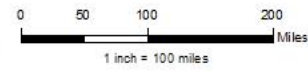
1. Manages Project Lifecycle
2. Built to DOT-PHMSA-FERC-RRC rules and standards for quicker regulations
3. Saves time and money.

**Transportation.gov**  
U.S. Department of Transportation



**ENERGY.GOV**

**CONFIDENTIAL**



NO.	DATE	REVISIONS	BY	APP.	DWG. NO.	REFERENCE DRAWINGS	CHECKS
A	9/1/2019	PRELIMINARY					JOB NO: NOTED DWN BY: PZR CHK BY: RBT PROJ ENG: EWJH PROJ MNG: [blank] DISTRIB: [blank]

VICINITY MAP FDS ESRI ARCMAP TEMPLATE COUNTY, STATE		
SCALE: NOTED	DWG. NO: NEH-OM-001	REV: A



# **GEOFINISH**

**Smart Technology**

**Data Model Loaders**

**Utilities - Pipelines - Materials**

